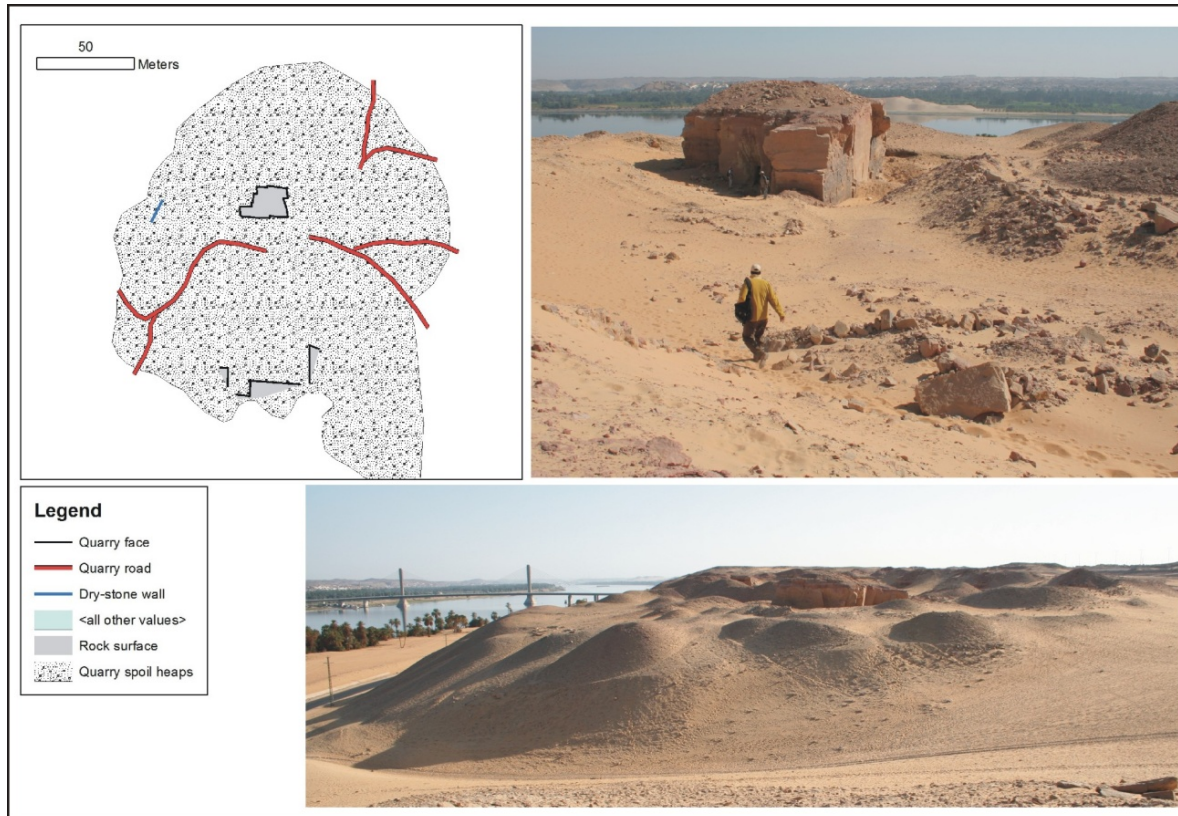
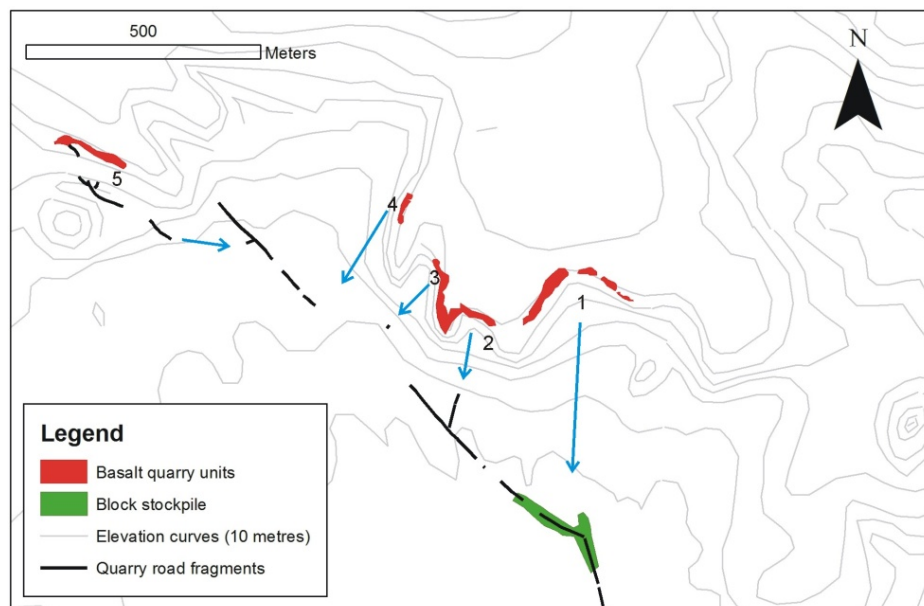


Example sheet 5

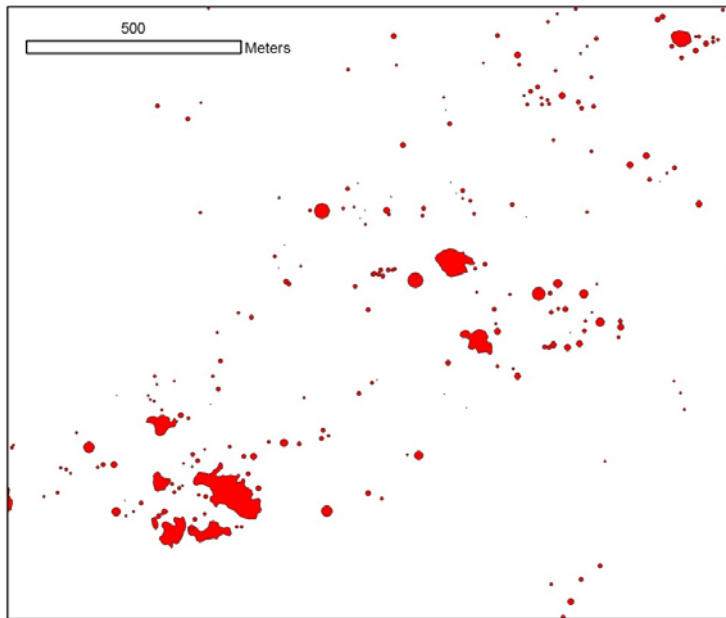
Examples of quarries/quarry units



A quarry unit (building stone, Aswan West Bank) comprising quarry faces, spoil heaps, roads and stone built features.



Quarry units and their internal logistics as defined in the Widan el Faras basalt quarry. Each unit may correspond with one pyramid complex.



Small (left photo) and large (right photo) quarry units in Chephren's Quarry, Egypt, and visualisation of them on a map.